

# ZOOMLION TRUCK CRANE ZTC250V531



**ZOOMLION**

**Zoomlion Heavy Industry Science & Technology Co.,Ltd.**

Add: No.677, Lugu Road, Zoomlion Industrial Park, Changsha, Hunan, China, 410205

Copyright©2019 Zoomlion. All rights reserved. Reproduction and copying of any part of contents is not allowed for any purposes without Zoomlion's approval.



Product specifications are subject to change without notice and obligation. The photographs and/or drawing in this document are for illustrative purposes only. Please consult your local ZOOMLION dealer for more information.  
website:en.zoomlion.com 2020.04.30

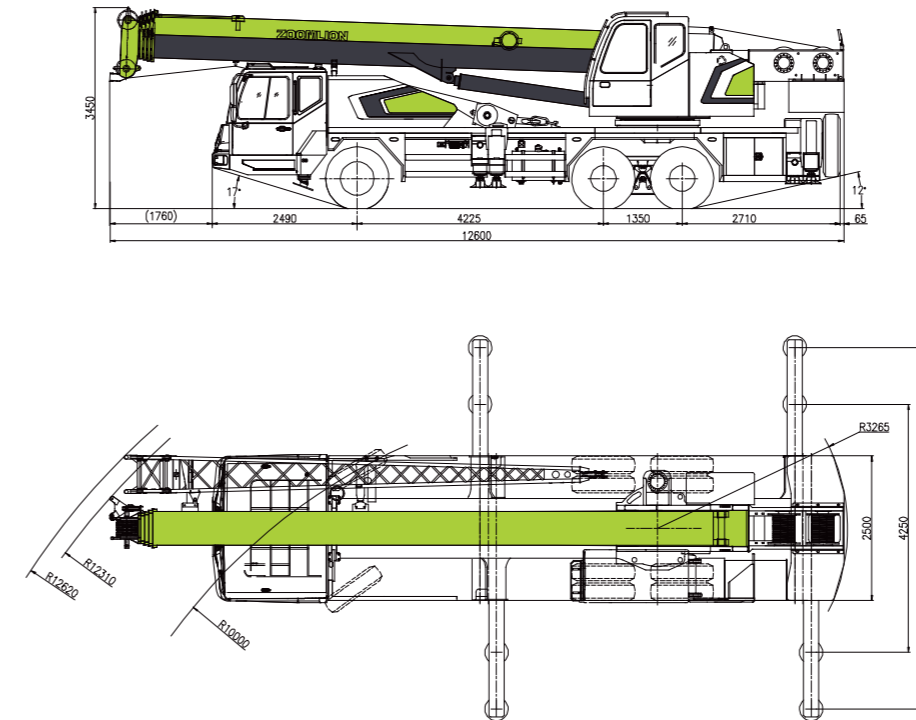
**ZOOMLION**

**4.0**  
PRODUCTS

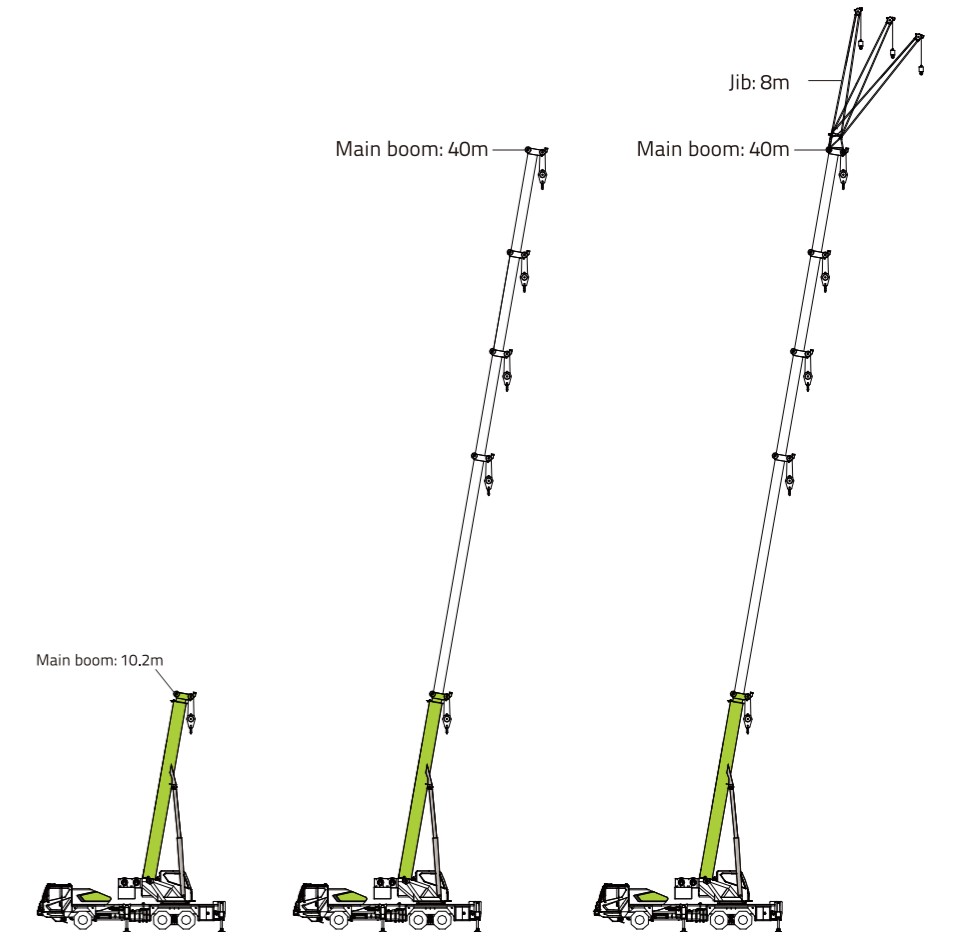
# CONTENTS

CRANE DIMENSIONS .....	2
BOOM / JIBS COMBINATION .....	2
CRANE AND COMPONENT WEIGHTS .....	3
LIFTING HEIGHT CURVE .....	3
LIFTING CAPACITY TABLES .....	4-5
TECHNICAL SPECIFICATIONS .....	6
MAIN TECHNICAL PARAMETERS .....	6

## CRANE DIMENSIONS



## BOOM / JIBS COMBINATION



## CRANE AND COMPONENT WEIGHTS

Axle	1	2	3	Total weight
T	6.5	12.05	12.05	29.6

### Hook Detailed Description

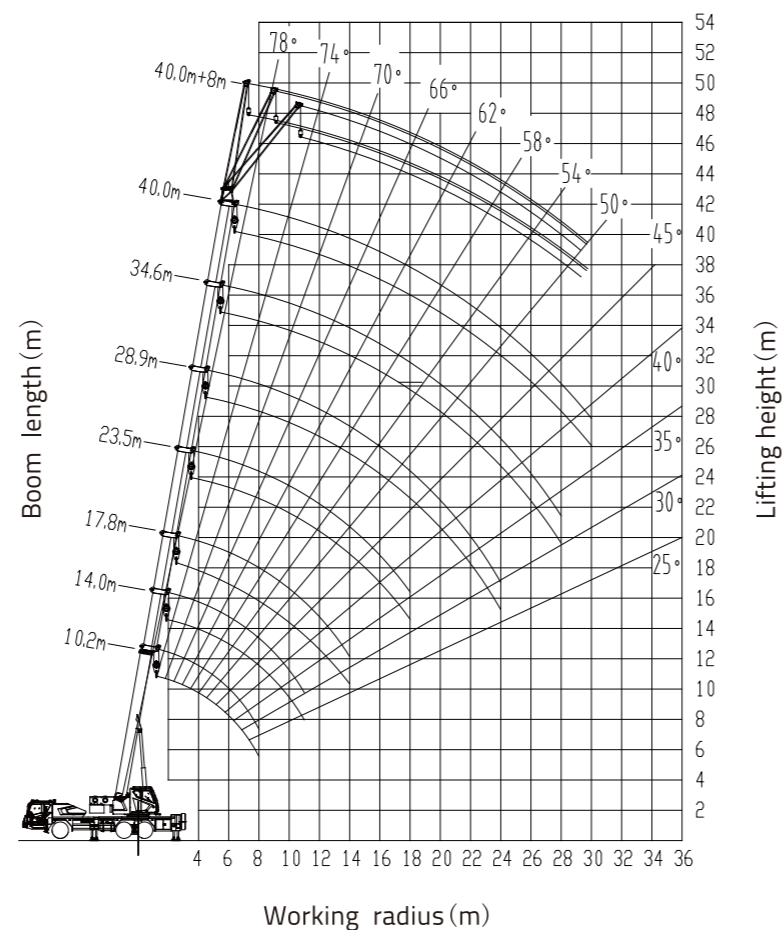
Hook Load T	No. of Sheaves	No. of Lines	Weight Kg	Remark
25	5	10	256	standard
3	—	1	80	standard

### Working Speed

12R22.5/ 11.00R20	km/h MAX.	42	9/R1
	85		

Drive	Operation Speed	Rope diameter/length	Max. single line pull
1	135m/min	Φ 14mm/170m	3000Kg
2	135m/min	Φ 14mm/105m	3000Kg
360	0 ~ 2.7r/min		
	25s / 42s		
	82s / 80s		

## LIFTING HEIGHT CURVE



## LIFTING CAPACITY TABLES

Unit: kg

Working radius (m)	Main boom (m)						
	Telescoping cylinder I and outrigger fully extended, over rear and sides						
	10.2m	14.0m	17.8m	23.5m	28.9m	34.6m	40.0m
3.0	25000	23000	19000				
3.5	25000	21500	19000				
4.0	23000	20000	19000				
4.5	21000	19000	19000	16500			
5.0	19000	17500	17500	15400			
5.5	17400	16500	16000	14300	12000		
6.0	16000	15500	15000	13400	11500		
6.5	14200	14000	13800	12500	10800		
7.0	12800	12600	12400	11700	10200	8500	
7.5	11800	11600	11400	11000	9700	8100	
8.0	10800	10600	10400	10400	9100	7700	
9.0		8800	8700	9200	8200	6900	6000
10.0		7500	7400	8100	7400	6300	5600
11.0		6400	6300	7000	6700	5800	5200
12.0			5200	5900	6100	5400	4900
13.0			4300	5000	5400	5000	4600
14.0			3500	4200	4600	4600	4200
15.0				3600	4000	4200	3900
16.0				3100	3500	3800	3600
18.0				2300	2700	3000	3100
20.0					2000	2400	2600
22.0					1500	1800	2000
24.0					1100	1400	1550
26.0						1000	1200
28.0						700	900
30.0							650
I	0	3.8	7.6	7.6	7.6	7.6	7.6
II	0	0	0	5.7	11.1	16.8	22.2
Reeving	10	8	7	6	4	3	3
Hook							25t

Unit: kg

Working radius (m)	Main boom (m)					
	Telescoping cylinder I half extended, outrigger fully extended, over rear and sides					
	10.2m	14.0m	19.7m	25.1m	30.8m	36.2m
3.0	25000	23000	16500			
3.5	25000	21500	16500			
4.0	23000	20000	16500			
4.5	21000	19000	16500	14500		
5.0	19000	17500	16500	14500		
5.5	17400	16500	16500	14500		
6.0	16000	15500	15500	14500	9500	
6.5	14200	14000	14000	13500	9100	
7.0	12800	12600	12600	12600	8700	
7.5	11800	11600	11600	11600	8300	6800
8.0	10800	10600	10600	10400	7900	6400
9.0		8800	9300	9000	7200	6000
10.0		7500	8300	8000	6600	5500
11.0		6400	7100	7000	6100	5100
12.0			6000	6400	5600	4700
13.0			5100	5500	5200	4400
14.0			4300	4700	4800	4000
15.0			3700	4100	4400	3700
16.0			3200	3600	3900	3400
18.0				2700	3000	3000
20.0				2100	2400	2600
22.0					1900	2100
24.0					1450	1650
26.0					1100	1300
28.0						1000
30.0						750
I	0	3.8	3.8	3.8	3.8	3.8
II	0	0	5.7	11.1	16.8	22.2
Reeving	10	8	6	5	4	3
Hook						25t



## LIFTING CAPACITY TABLES

Unit: kg

Working radius (m)	Main boom (m)				
	Telescoping cylinder I fully retract, outrigger fully extended, over rear and sides				
	10.2m	15.9m	21.3m	27.0m	32.4m
3.0	25000	16500	14500		
3.5	25000	16500	14500		
4.0	23000	16500	14500		
4.5	21000	16500	14500		
5.0	19000	16500	14500	9500	
5.5	17400	16500	14500	9500	
6.0	16000	15500	13900	9100	
6.5	14200	14000	13300	8700	7100
7.0	12800	12600	12500	8300	6800
7.5	11800	11600	11500	7900	6500
8.0	10800	10600	10500	7500	6200
9.0		9100	9300	6800	5600
10.0		8100	8300	6200	5100
11.0		7100	7500	5700	4700
12.0		6100	6500	5300	4300
13.0		5400	5800	4900	4000
14.0			5000	4600	3800
15.0			4400	4200	3500
16.0			3800	3900	3200
18.0			3000	3300	2800
20.0				2600	2500
22.0				2100	2200
24.0					1850
26.0					1500
28.0					1200
I	0	0	0	0	0
II	0	5,7	11,1	16,8	22,2
Reeving	10	6	5	4	3
Hook			25t		

Unit: kg

Main boom angle(°)	Main boom (m) + jib (m)		
	outrigger fully extended		
	40,0+8,0		
	0°	15°	30°
	Over rear and sides	Over rear and sides	Over rear and sides
80	3000	2500	2000
78	3000	2350	1900
76	2900	2200	1800
74	2700	2050	1700
72	2500	1900	1600
70	2300	1800	1500
68	2100	1700	1450
66	1900	1600	1400
64	1700	1500	1350
62	1500	1350	1250
60	1300	1200	1150
58	1100	1050	1000
56	950	900	850
54	800	750	700
52	700	650	600
50	600	550	500
Reeving		1	
Hook		3t	

## TECHNICAL SPECIFICATIONS

### Crane Superstructure

<b>Main boom</b>	5 section U-shaped main boom can telescope via ropes and sheaves, main boom length: 10.2m-40.0m.
<b>Jib</b>	One section jib, Jib length 8m, offset 0°, 15°, 30°.
<b>Slewing gear</b>	Hydraulic fixed displacement motor, planetary reducer and slewing bearing. Free swing function.
<b>Hoisting gear</b>	Dual winches with variable displacement piston motors and planetary reducers. Wire rope diameter:14mm.
<b>Hydraulic system</b>	Advanced hydraulic proportional control system with mechanical lever control. Quadruple gear pumps offer oil for all the movements. Hydraulic tank 500 liters.
<b>Electrical system</b>	DC 24V, superstructure and chassis electrical system offers a comfortable and safe operation.
<b>Operator's cab</b>	New cab with spacious room and man-machine friendly layout offers a comfortable operating experience. AC and heater.
<b>Safety devices</b>	LMI, limit switch, relief valve, emergency stop button etc.
<b>Counterweight</b>	5T counterweight.

### Crane Carrier

<b>Chassis frame</b>	Made by ZOOMLION with high-tensile steel plate.
<b>Outrigger</b>	1 stage H-type outriggers with wide spread 5.4m(W)*6.2m(L). 5th outrigger.
<b>Engine</b>	WEICHAI WP7.240E31 diesel engine, output 176KW, max. torque 1050N*m. Fuel tank 250 liters.
<b>Transmission</b>	FAST mechanical gear box with 9 forward gears and 1 reverse gear.
<b>Axles</b>	Front steering axle, rear tandem axles are driving axles.
<b>Suspension</b>	Front axle leaf steel spring suspension and rear axle rubber suspension with thrust rod and balanced Beams.
<b>Steering</b>	Front axle steering with power steering assistant system.
<b>Brake</b>	Service brake, parking brake and emergency brake and auxiliary brake.
<b>Tires</b>	Total 10 tires with one spare tire, tire size: 12R22.5 / 11.00R20.
<b>Driver's cab</b>	Modern and luxury driver's cab with man-machine friendly layout offers a comfortable operating experience. AC and heater.

## MAIN TECHNICAL PARAMETERS

Item		Value	Remarks	
Working performance	Max. rated lifting capacity	kg	25000	
	Max. load moment of basic boom	kN.m	960	
	Max. load moment of Max. length main boom	kN.m	598	
	Max. lifting height of basic boom	m	10.9	
	Max. lifting height of main boom	m	40.2	These parameters do not include deflection of boom and jib.
Max. lifting height of jib	m	47.8		
Working speeds	Max. hoist rope speed (Main winch)	m/min	135	At 4 <sup>th</sup> layer
	Max. hoist rope speed (Auxiliary winch)	m/min	135	At 4 <sup>th</sup> layer
	Boom derricking up time	s	25	
	Boom telescoping out time	s	82	
Driving	Slewing speed	r/min	0~2.7	
	Max. working altitude	m	2000	
	Max. driving speed	km/h	85	
	Max. gradeability	%	42	
	Min. turning diameter	m	≤20	
	Min. ground clearance	mm	250	
Weight	Oil consumption per hundred kilometer	L	28	
	Deadweight in driving condition	kg	30600	
	Complete vehicle kerb mass	kg	30470	
	Front axle load	kg	6500	
Dimension	Rear axle load	kg	24100	
	Overall dimensions (L×W×H)	mm	12600×2500×3450	
	Outrigger spread (W)		5.40	
	Outrigger spread (L)	m	Fully extended: 6.20, Half extended: 4.25	
	Tail slewing radius	mm	3265	
	Main boom length	m	10.2 ~ 40.0	
	Main boom angle	°	-1 ~ 80	
	Jib length	m	8	
Offset	°	0, 15, 30		